

Rigid Videoscopes

RVM Series

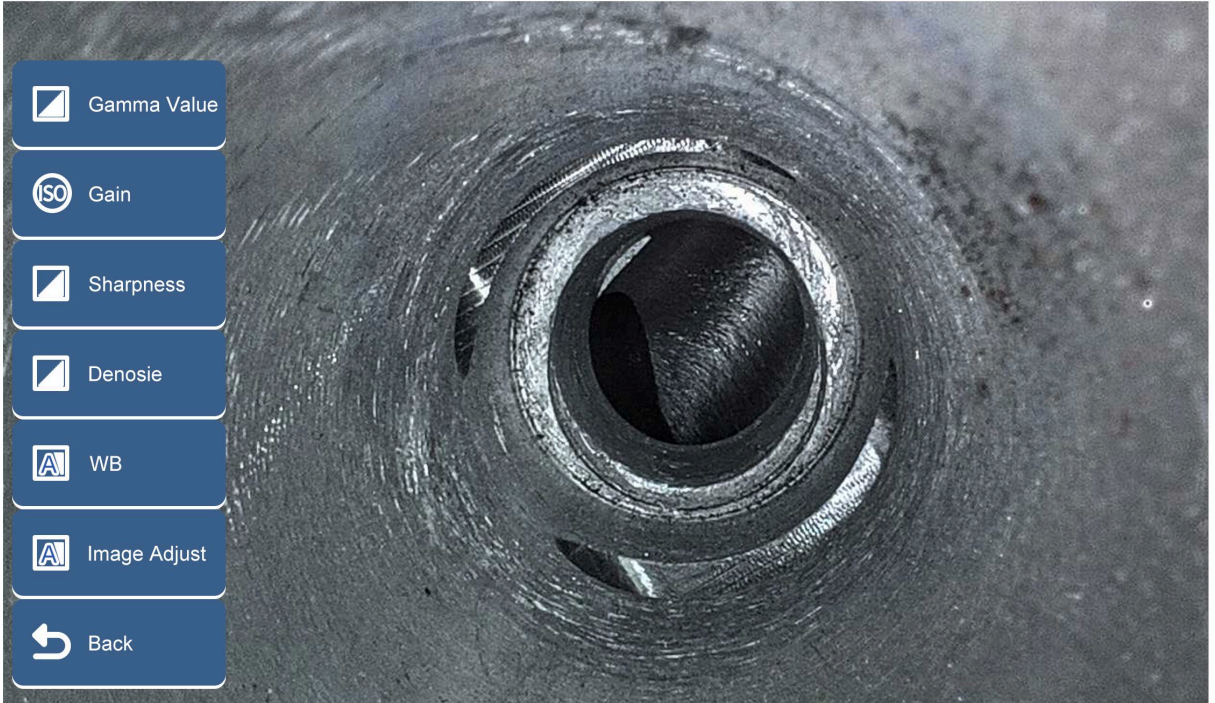
RVM series rigid videoscope are designed to meet the demands of harsh industrial environments, available in diameters 0.8mm ~8.0mm, support Front view(0°), side view(90°), and dual camera(0° and 90°). Also there are extra two direction-of-view options, 30° or 45°. Special cameras such as wide-angle, macro, infrared, UV, etc. can be selected and customized.



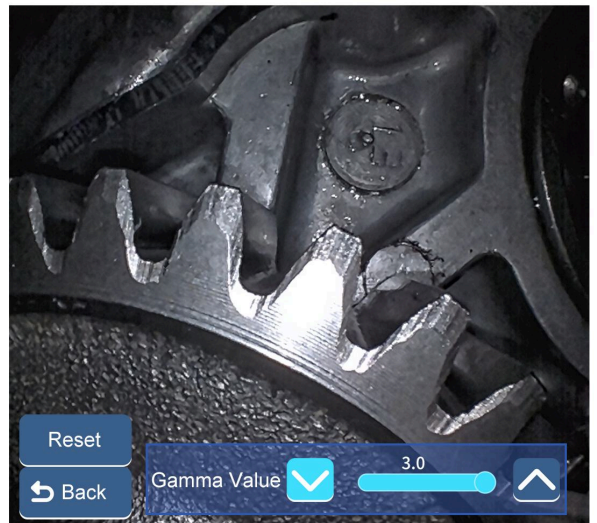
Features

Software Function

Image parameters can be adjusted to make the image better.



Before



After

Gain



Before

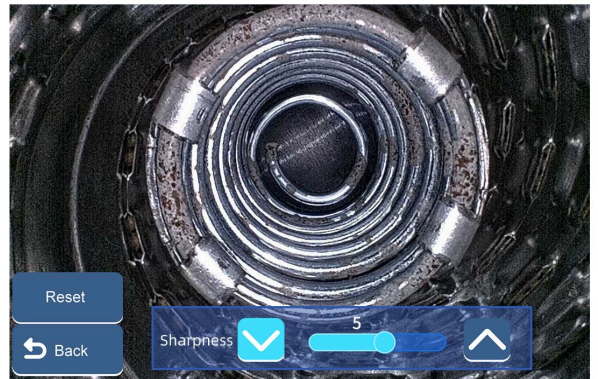


After

Sharpness



Before

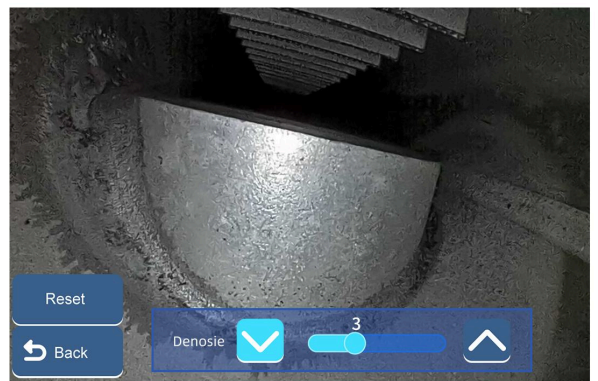


After

Denoise



Before

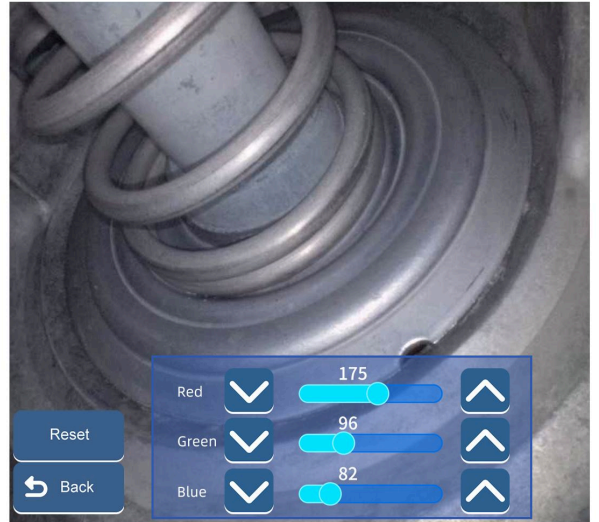


After

WB



Before adjustment



After adjustment

Color Adjustment

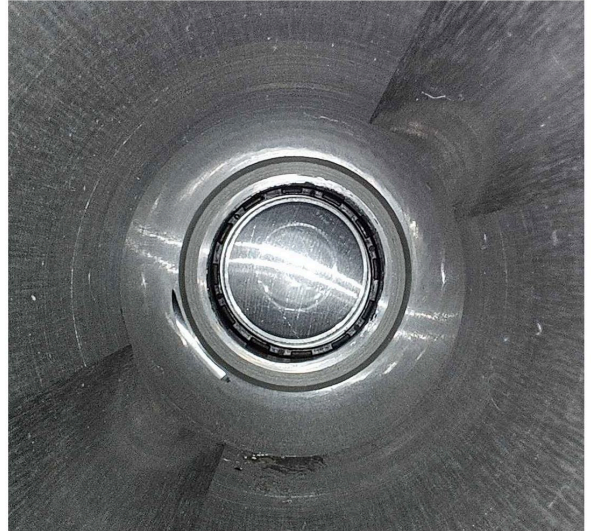


EV Setting

When observing shiny surfaces, using a lower EV prevents overexposure; when examining dark objects, a higher EV is recommended to capture more details.



Before



After

Graffiti and Text watermark

Making doodle marks on images and entering text descriptions, which are crucial for facilitating subsequent analysis and resolution.



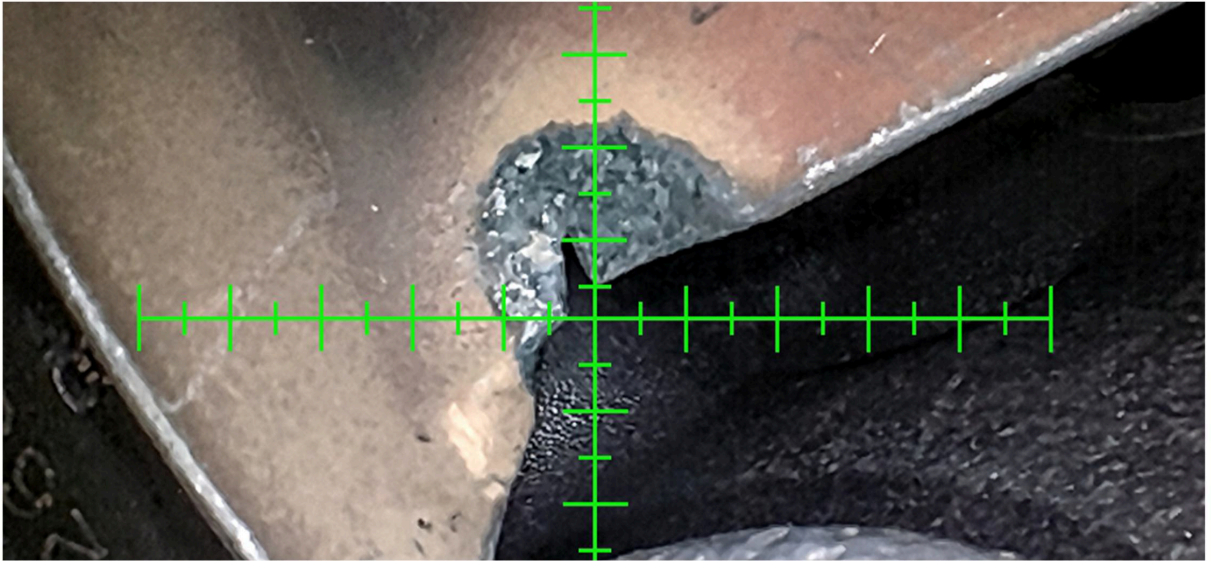
Graffiti



Text watermark

Ruler

According to the reference object, the size of the target in front of the lens can be estimated. Three types of options available.



Cross ruler

Data sharing and output



WiFi

During the inspection process, the WiFi application can be used to transfer real-time images to be shared on a mobile phone or an iPad.

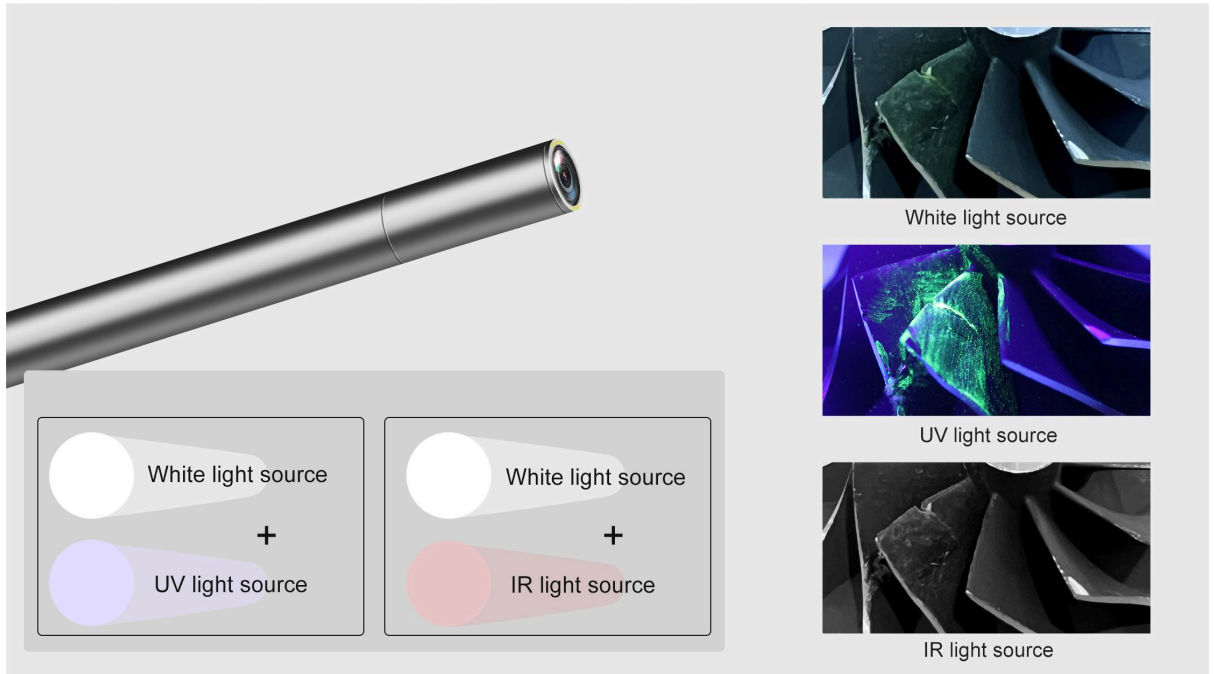


HDMI Output

Images detected can be output in real time to a large screen via the HDMI data cable.

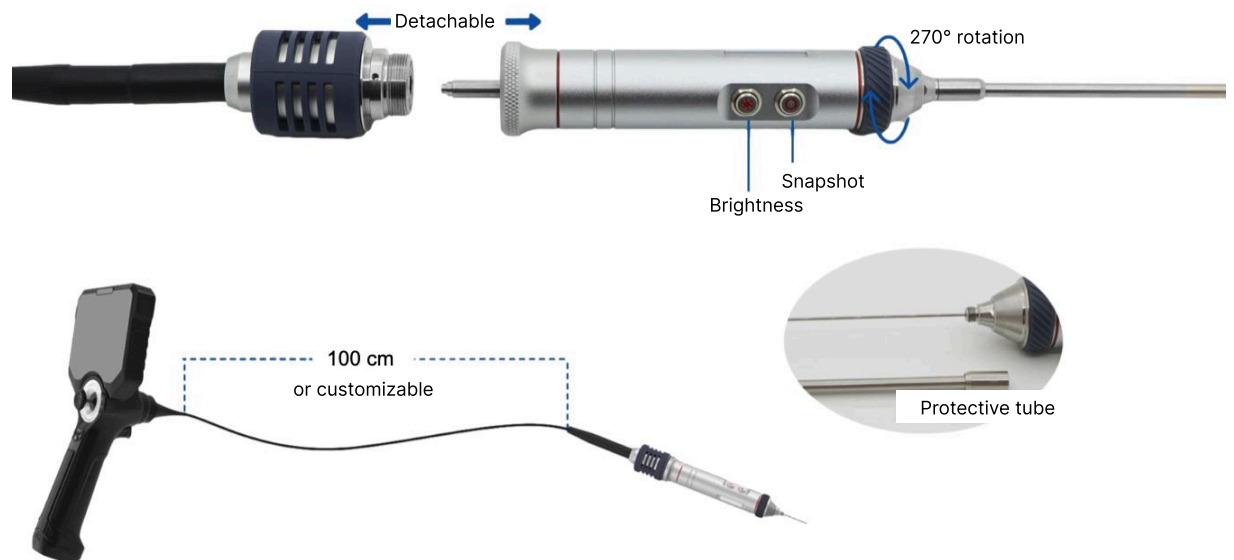
More advantages

The RVM series utilizes high-brightness fiber optic illumination. Not only provides higher brightness compared to front LED lighting, but also enhances the durability and reliability of the camera tip. UV and IR light source options to meet specific inspection needs, such as identifying tiny cracks or exploring distant objects in darkness.



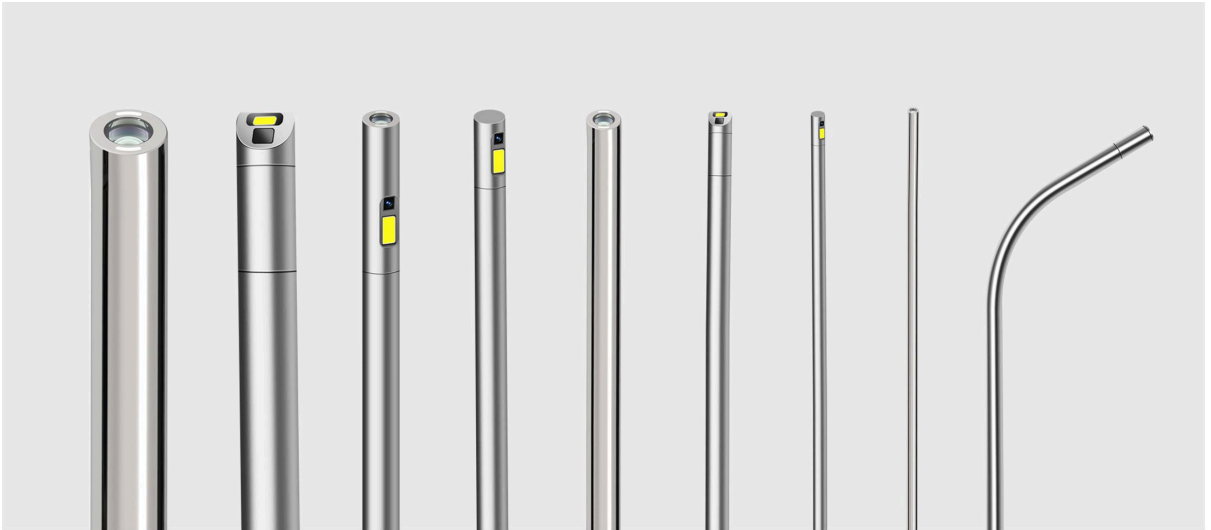
Multifunctional handle design

The detachable design of the handle and the insertion tube enables the possibility of carrying multiple-sized cameras for work. The objective tube can rotate 270°, making it easy to observe the detection from different spatial positions.

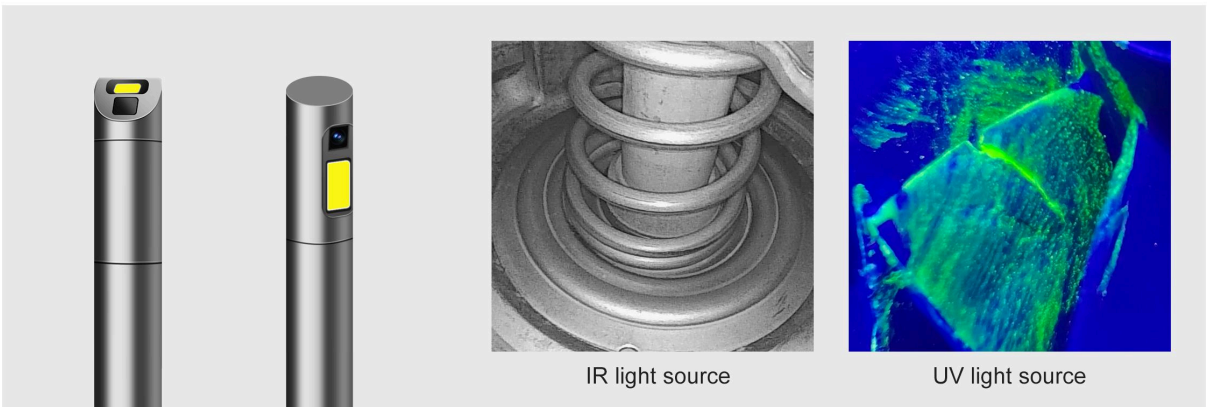


Various-sized rigid videoscopes

RVM series small diameter rigid tube including 0.8mm, 0.97mm, 1.2mm, 1.4mm, 1.8mm, 2.0mm, 2.8mm, can be disassembled. Equipped with high-brightness fiber lighting, combined with a small-diameter insertion tube, it enables users to handle extremely fine hole workpieces with ease.



The 3.6mm and 4.0mm RVM rigid videoscopes can be equipped with infrared, UV, dual-light sources, side-view, and 35° or 45° direction-of-view cameras.



IR light source

UV light source

The 6.0mm and 8.0mm RVM rigid videoscopes are equipped with 2M full-high-definition cameras, further enhancing the image quality.



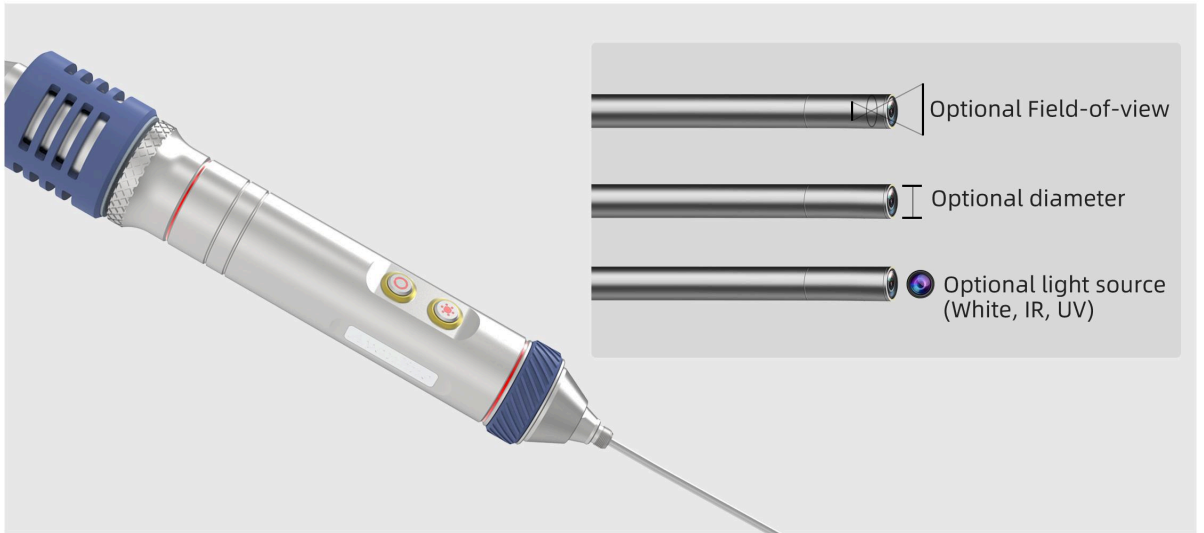
1,000,000 Pixels



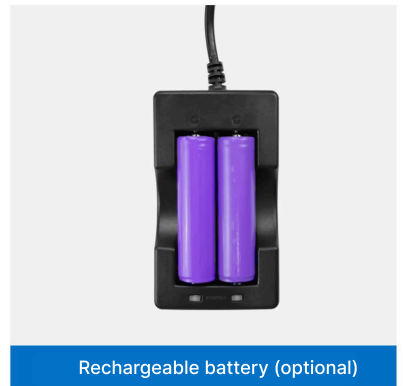
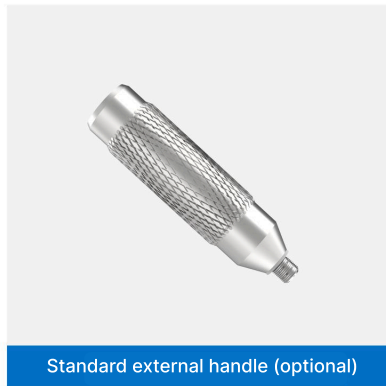
2,000,000 Pixels

Customized Products

Irrespective of the length and diameter of the rigid tube, as well as the pixel resolution, field-of-view, and light source of the lens, all components can be selectively integrated. This enables the provision of highly customized products that are precisely tailored to diverse inspection scenarios.



Accessories



Aluminum alloy case (for longer tubes)

Application scenarios

Aviation maintenance



Aircraft Engine Maintenance

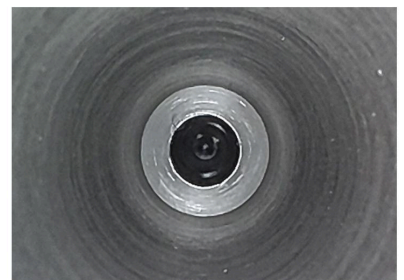
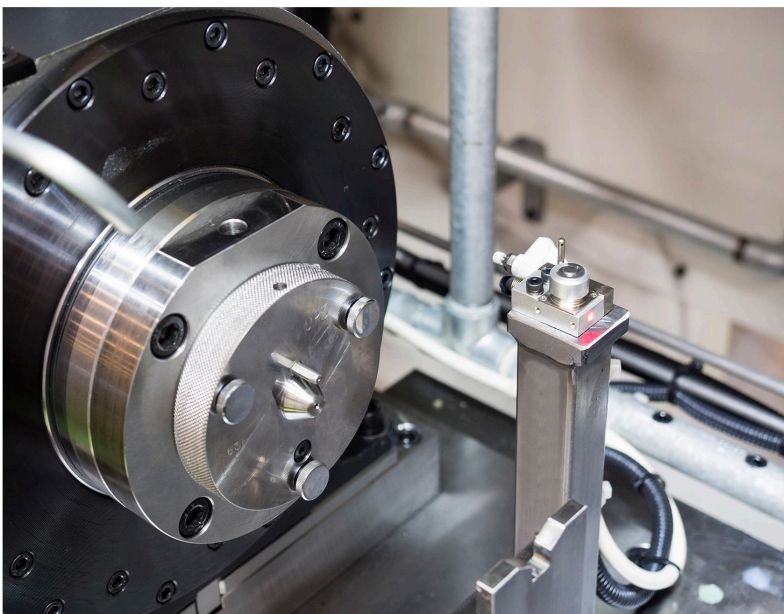


Taken with RVM rigid videoscope



Taken with RVM rigid videoscope

Inspection of precision machined parts

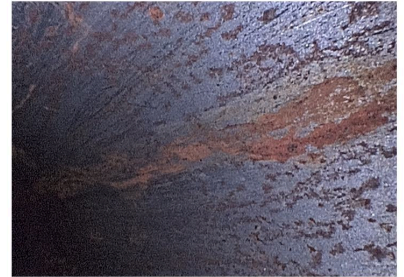
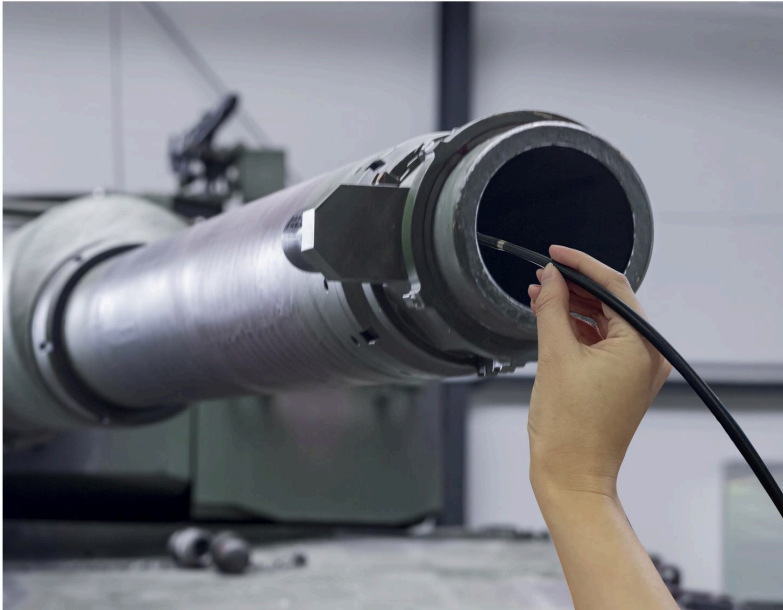


Taken with RVM rigid videoscope



Taken with RVM rigid videoscope

Pipeline inspection



RVM rigid videoscope with 45° direction-of-view application in gun barrel manufacturing



RVM rigid videoscope with side view (90° direction-of-view)

Security protection



RVM rigid videoscope with long cable



RVM rigid videoscope with IR source

Rigid videoendoscopes with interchangeable probes “RVM”

CODE	DIAMETER	RIGID PROBE LENGTH	PROBE MATERIAL	VIEWING DIRECTION	DEPTH OF FIELD	FIELD OF VIEW	RESOLUTION
RVM-085D	0,85 mm	13cm	AISI 316L stainless steel	Forward 0°	3-60mm	120°	400×400 Pixels(160,000)
RVM-097D	0,97mm	13cm	AISI 316L stainless steel	Forward 0°	3-60mm	120°	400×400 Pixels(160,000)
RVM-12D	1,2mm	13cm	AISI 316L stainless steel	Forward 0°	3-70mm	120°	400×400 Pixels(160,000)
RVM-14D	1,4mm	13cm	AISI 316L stainless steel	Forward 0°	3-70mm	120°	400×400 Pixels(160,000)
RVM-16D	1,6mm	13cm	AISI 316L stainless steel	Forward 0°	3-70mm	120°	400×400 Pixels(160,000)
RVM-18D	1,8mm	13cm	AISI 316L stainless steel	Forward 0°	3-80mm	120°	400×400 Pixels(160,000)
RVM-18HD	1,8mm	13cm	AISI 316L stainless steel	Forward 0°	3-80mm	120°	720×720 Pixels(520,000)
RVM-20D	2,0mm	13cm	AISI 316L stainless steel	Forward 0°	3-80mm	120°	400×400 Pixels(160,000)
RVM-20HD	2,0mm	13cm	AISI 316L stainless steel	Forward 0°	3-80mm	120°	400×400 Pixels(160,000)
RVM-28D	2,8mm	13cm	AISI 316L stainless steel	Forward 0°	3-80mm	120°	720×720 Pixels(520,000)
RVM-28HD	2,8mm	13cm	AISI 316L stainless steel	Forward 0°	3-80mm	120°	720×720 Pixels(520,000)
RVM-36-135D	3,6mm	20cm	AISI 316L stainless steel	Forward 0°	5-80mm	135°	1280×720 Pixels(1,000,000)
RVM-40-135D	4,0mm	20cm	AISI 316L stainless steel	Forward 0°	5-80mm	135°	1280×720 Pixels(1,000,000)
RVM-40D	4,0mm	20cm	AISI 316L stainless steel	Forward 0°	5-80mm	120°	1280×720 Pixels(1,000,000)
RVM-52D	5,2mm	20cm	AISI 316L stainless steel	Forward 0°	5-80mm	90°	1920×1080 Pixels(2,000,000)
RVM-60D	6,0mm	20cm	AISI 316L stainless steel	Forward 0°	15-200mm	90°	1920×1080 Pixels(2,000,000)
RVM-80D	8,0mm	20cm	AISI 316L stainless steel	Forward 0°	15-200mm	90°	1920×1080 Pixels(2,000,000)
RVM-18L	1,8mm	13cm	AISI 316L stainless steel	Side 90°	1-20mm	120°	400×400 Pixels(160,000)
RVM-20L	2,0mm	13cm	AISI 316L stainless steel	Side 90°	1-20mm	120°	400×400 Pixels(160,000)
RVM-30L	3,0mm	20cm	AISI 316L stainless steel	Side 90°	3-50mm	120°	400×400 Pixels(160,000)
RVM-30HL	3,0mm	20cm	AISI 316L stainless steel	Side 90°	3-50mm	120°	720×720 Pixels(520,000)
RVM-40L	4,0mm	20cm	AISI 316L stainless steel	Side 90°	5-100mm	120°	1280×720 Pixel(1,000,000)
RVM-36HL30	3,6mm	20cm	AISI 316L stainless steel	Angled 30°	3-80mm	120°	720×720 Pixels(520,000)
RVM-40HL45	4,0mm	20cm	AISI 316L stainless steel	Angled 45°	3-80mm	120°	720×720 Pixels(520,000)
RVM-23DL	2,3mm	13cm	AISI 316L stainless steel	Dual 0°/90°	0°: 3-80mm 90°: 3-50mm	120°	400×400 Pixels(160,000)
RVM-28DL	2,8mm	13cm	AISI 316L stainless steel	Dual 0°/90°	0°: 3-80mm 90°: 3-50mm	120°	400×400 Pixels(160,000)