

# NGC Videoendoscope

**COBB**  
FIBRE OTTICHE



COBB FIBRE OTTICHE SRL

Via Nelson Mandela, 20 | 24048 Treviolo (BG) | Italy Tel. +39 035 0448601 - Fax +39 035 0448585  
info@fibre-ottiche.com - www.endoscopi-industriali.it

# NGC Videoendoscope

**COBB**  
FIBRE OTTICHE

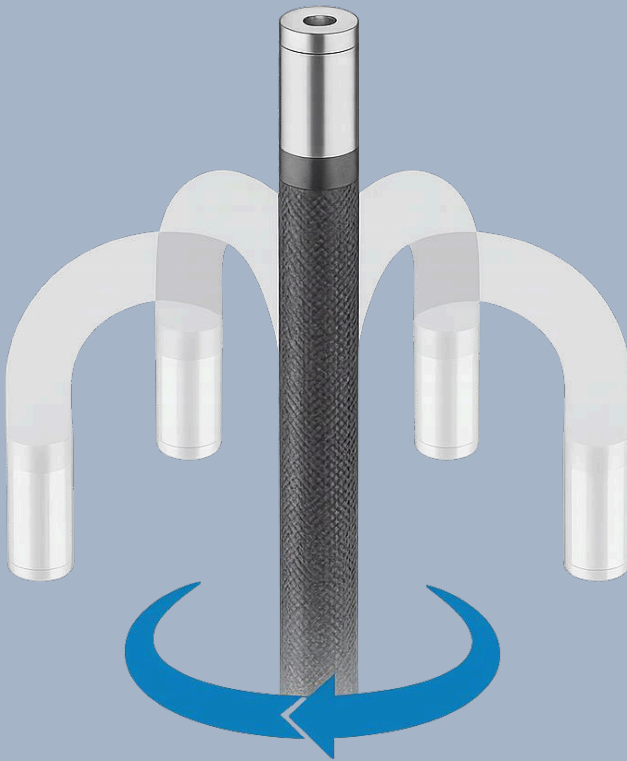
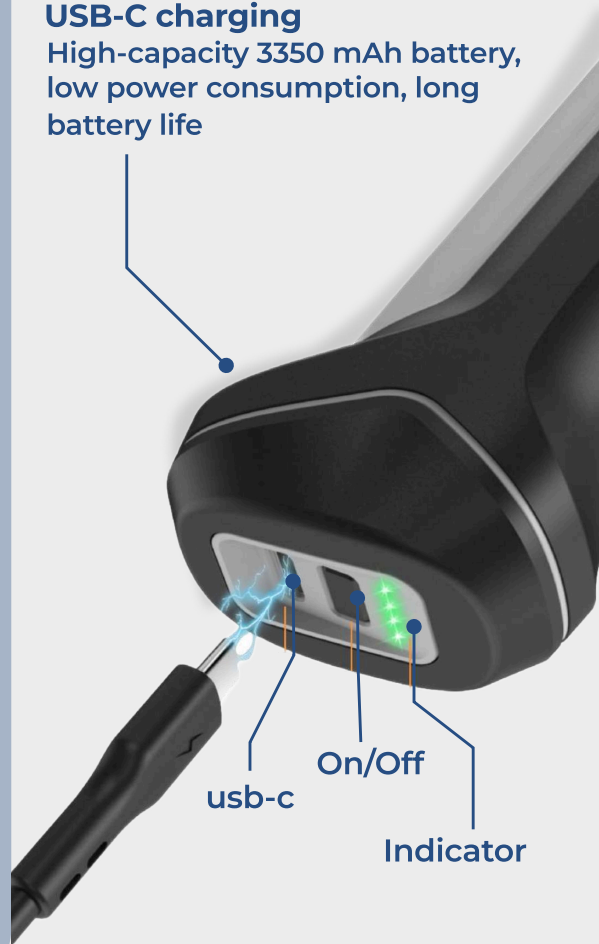
## IP67 PROBE

Fully immersible waterproof probe



## USB-C charging

High-capacity 3350 mAh battery, low power consumption, long battery life



## 180° rotatable

Everything under control with one hand

COBB FIBRE OTTICHE SRL

Via Nelson Mandela, 20 | 24048 Treviolo (BG) | Italy Tel. +39 035 0448601 - Fax +39 035 0448585

info@fibre-ottiche.com - www.endoscopi-industriali.it

# NGC Videoendoscope

**COBB**  
FIBRE OTTICHE

Mirror effect button

Freeze frame with sharp details



Mirror before

Mirror after



COBB FIBRE OTTICHE SRL

Via Nelson Mandela, 20 | 24048 Treviolo (BG) | Italy Tel. +39 035 0448601 - Fax +39 035 0448585  
info@fibre-ottiche.com - www.endoscopi-industriali.it

# NGC Videoendoscope

**COBB**  
FIBRE OTTICHE



COBB FIBRE OTTICHE SRL

Via Nelson Mandela, 20 | 24048 Treviolo (BG) | Italy Tel. +39 035 0448601 - Fax +39 035 0448585  
info@fibre-ottiche.com - www.endoscopi-industriali.it

# NGC Videendoscope

**COBB**  
FIBRE OTTICHE

## Available diameters

4,0mm - 6,0mm - 8,5mm

## Lighting

LEDs positioned at the probe tip

## Viewing head articulation

4-way - 360°

## Depth of field

From 10 mm to infinity

## Monitor

LDC 4,5"

## Field of view

120°

## Viewing direction

Forward 0°

## Monitor features

IPS Full-Color

## Available lengths

1,0mt - 2,0mt - 3,0mt

## Battery charger and mains power suppl

Power: 5V/2A

## Power supply

Lithium batteries, 3350 mAh and/or mains power supply 110/220 VAC

## SD slot for photo/video

SD card for storing photos and videos

## Working channel

Only 8.5 mm probe - L = 1.0-2.0 m

## Photo and video

Stored on SD card

## Key functions

Main menu settings: date, time, video, photo, zoom, light adjustment

## Anti-reflection system, white balance, sensitivity boost

Automatic

## White balance

Automatic

## Image control functions

Image mirroring, zoom, photo preview

## Camera pixels

1280X720

## Temperature resistance

Operating and storage temperatures: -20°C to +60°C

## Waterproof

IP67

